

NORDISK FORUM FOR BYGNINGSKALK

Rakennuskalkin Pohjoismainen Forum

NYBYGG OG MILJØERFARINGER MED TRADISJONELLE MURHUS



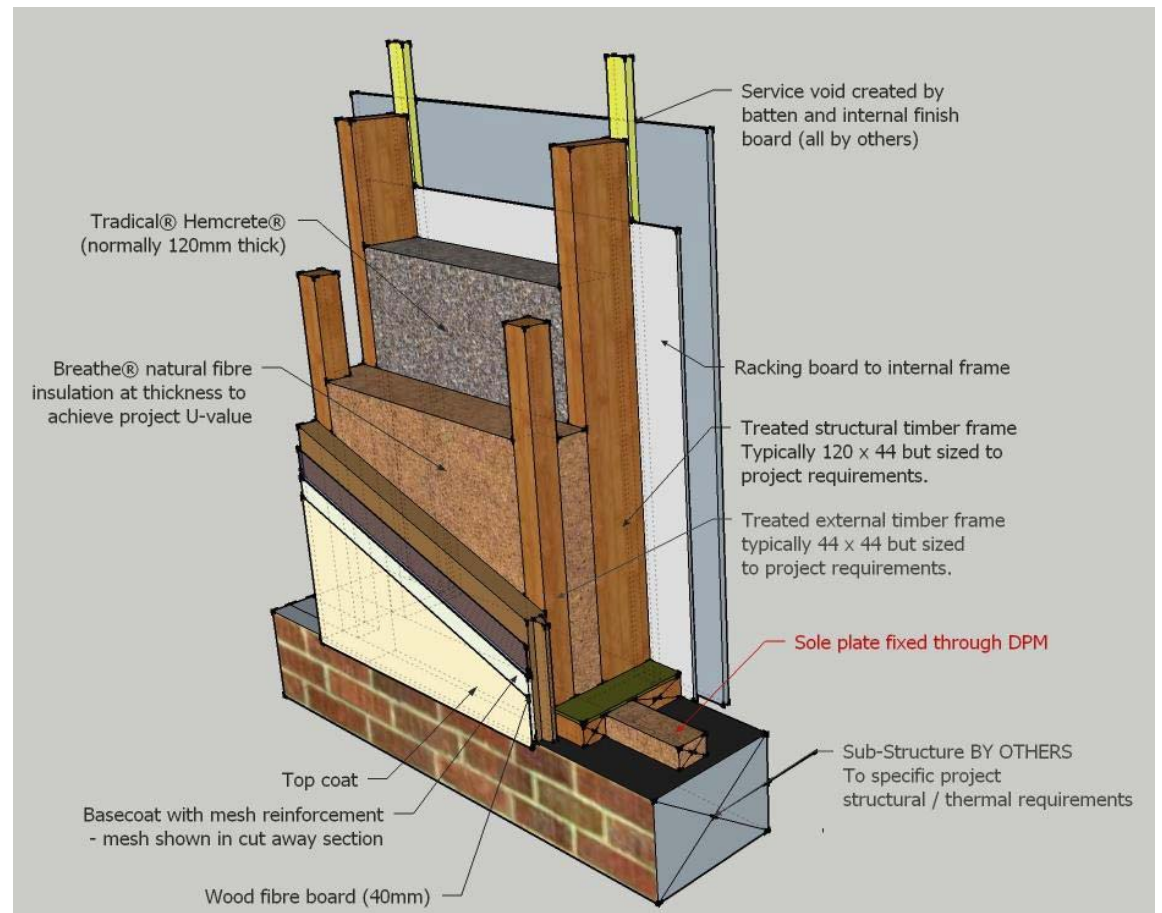
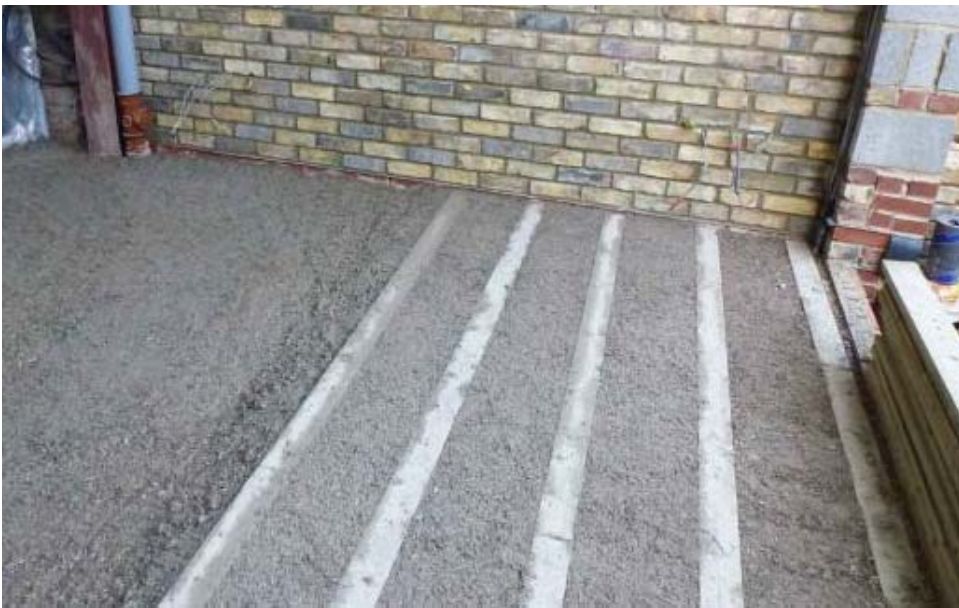
Torsdag 29. Oktober 2015

Jeremy Blake – Partner Purcell Architects





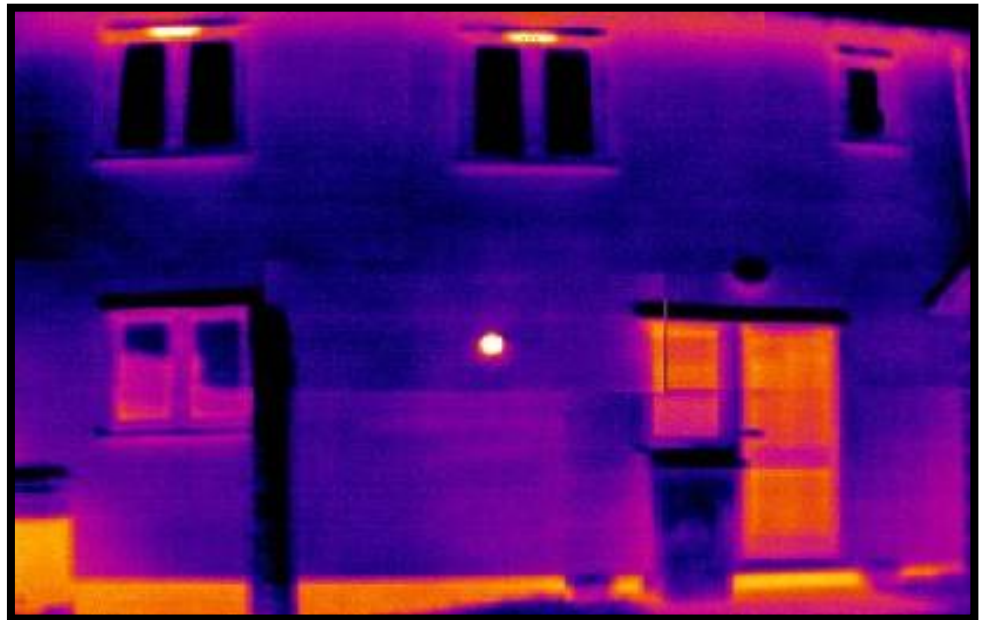
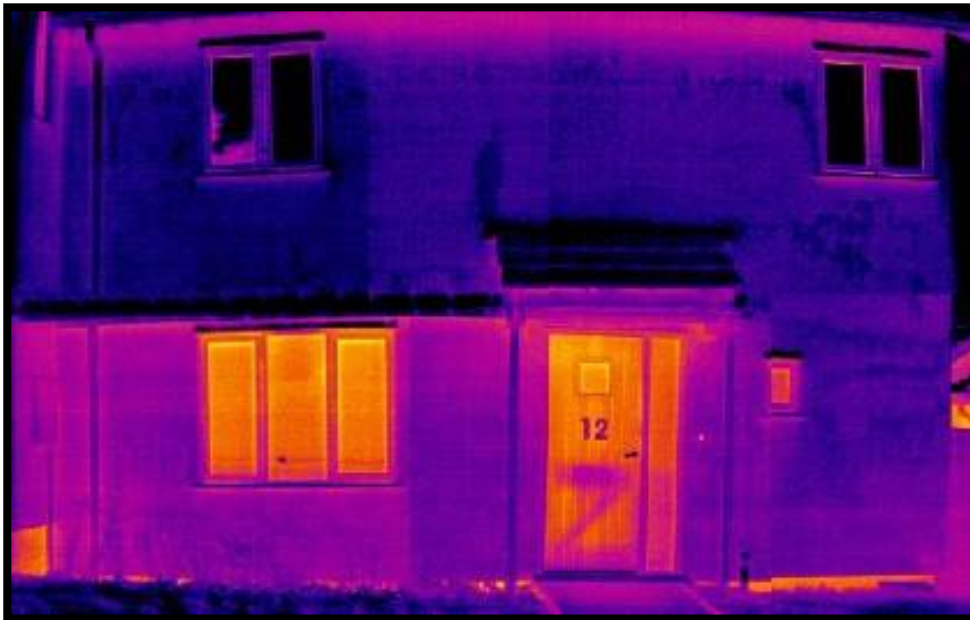
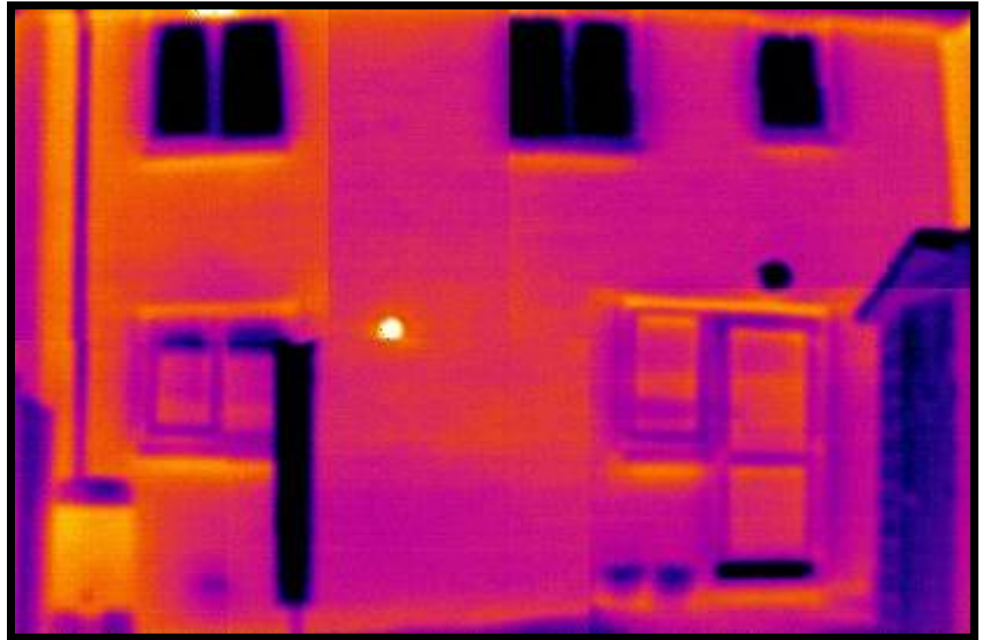




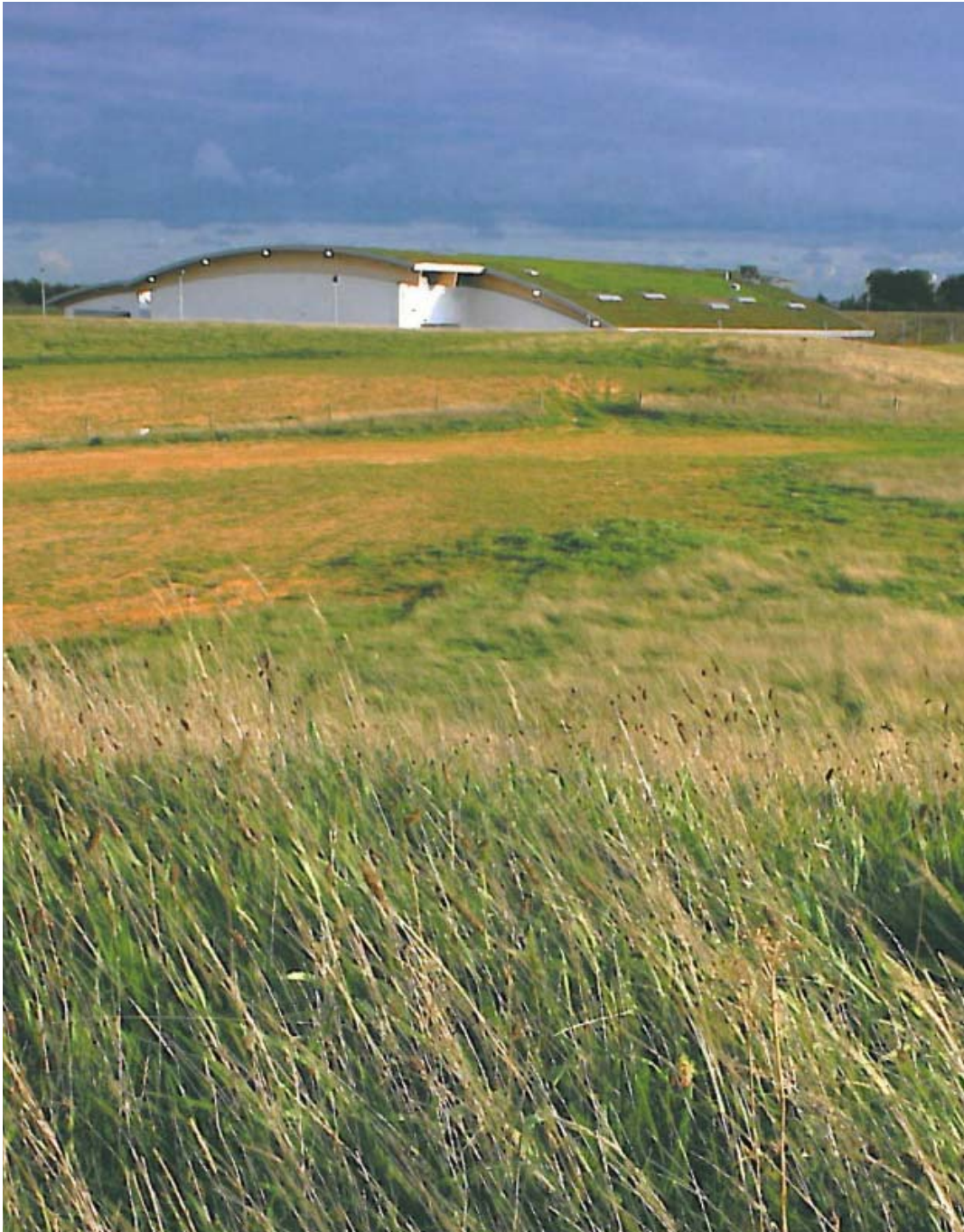
Wall type	Wall Thickness /mm	U-Value W/m ² .k	Cassette Thickness /mm
Ren 1	310	0.19	219
Ren 2	333	0.17	242
Ren 3	378	0.15	287
Ren 4	423	0.13	332
Ren 5	468	0.11	377

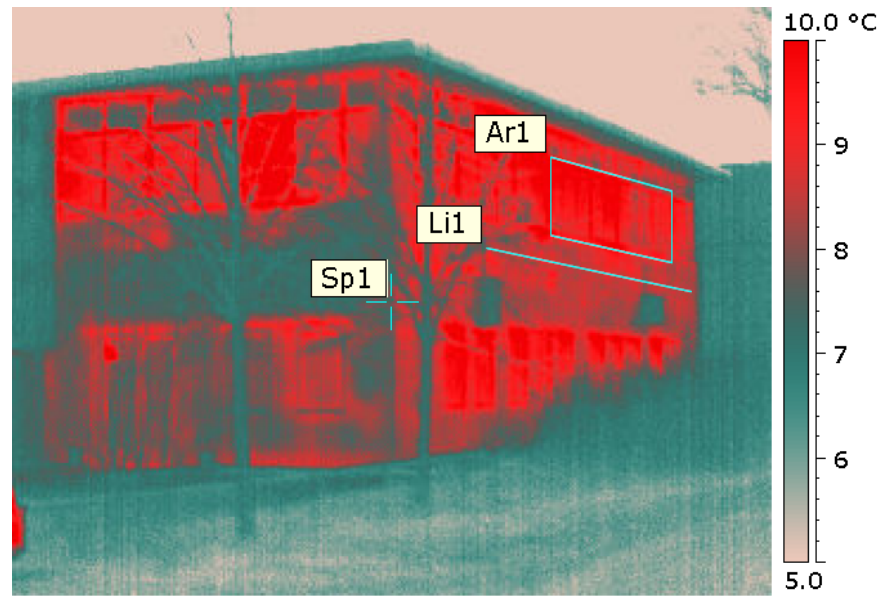
Assumes 40mm WFB + 11mm render externally and 9mm racking board + 25mm batten + 12.5mm board internally (and skim)

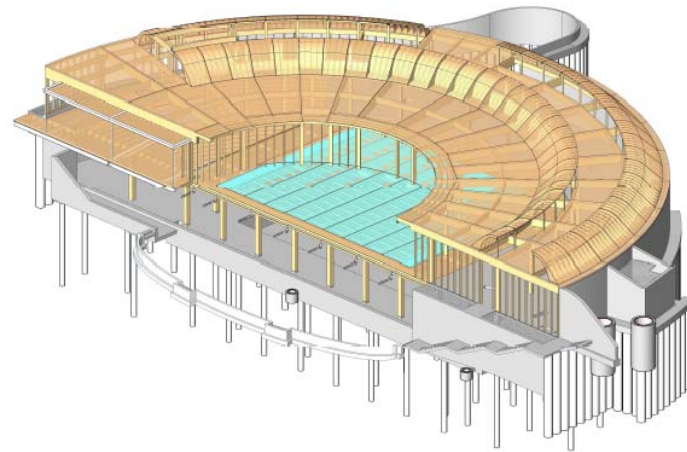












MURCELL MILLER TRITTON



BRAXTED PARK





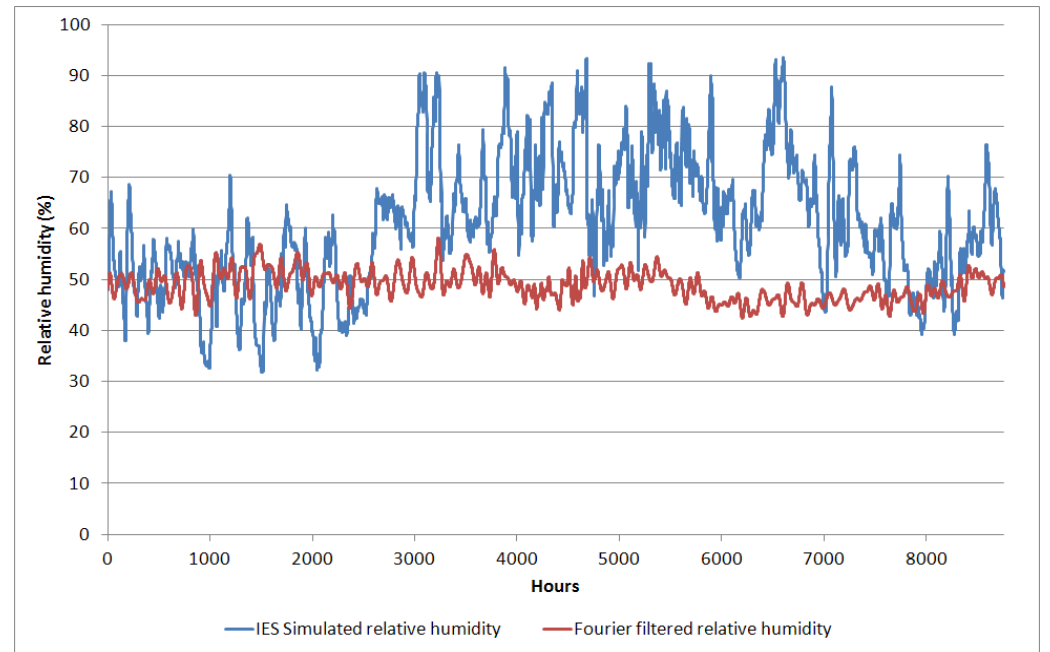
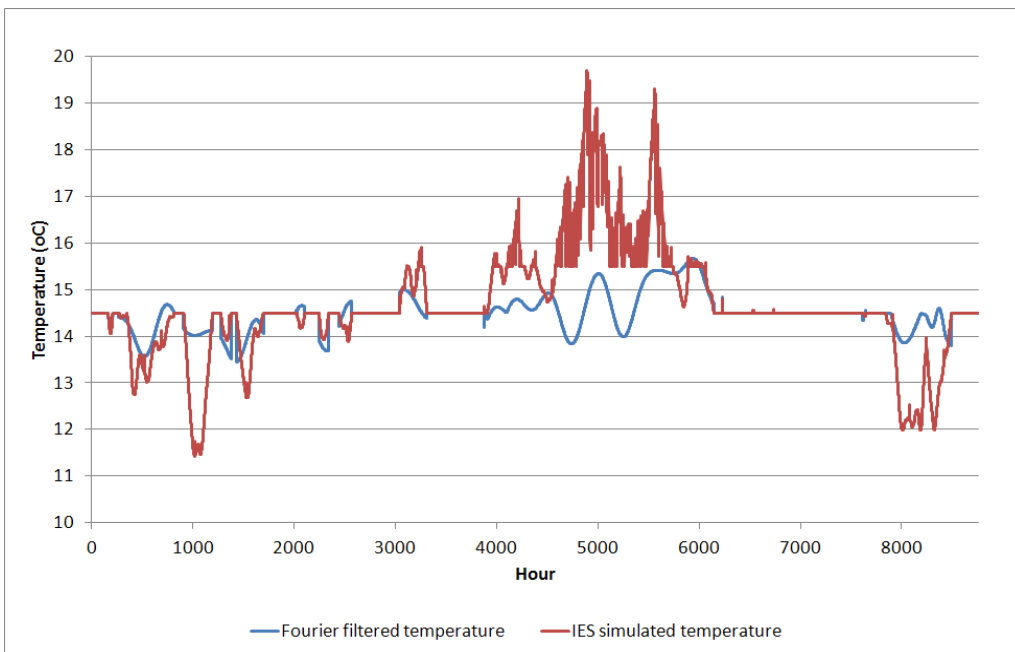
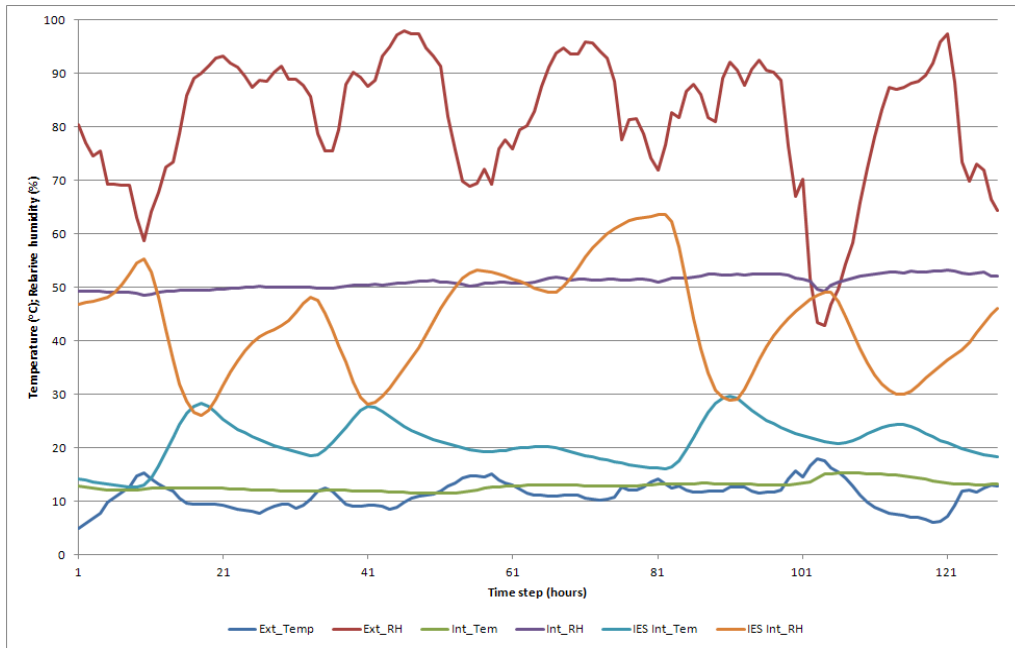


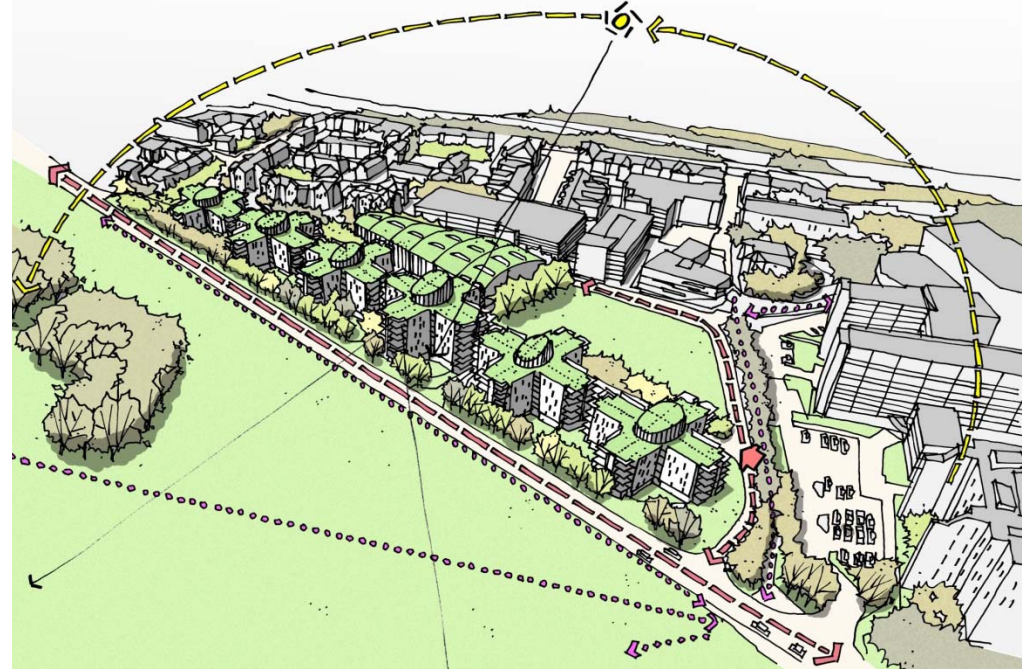




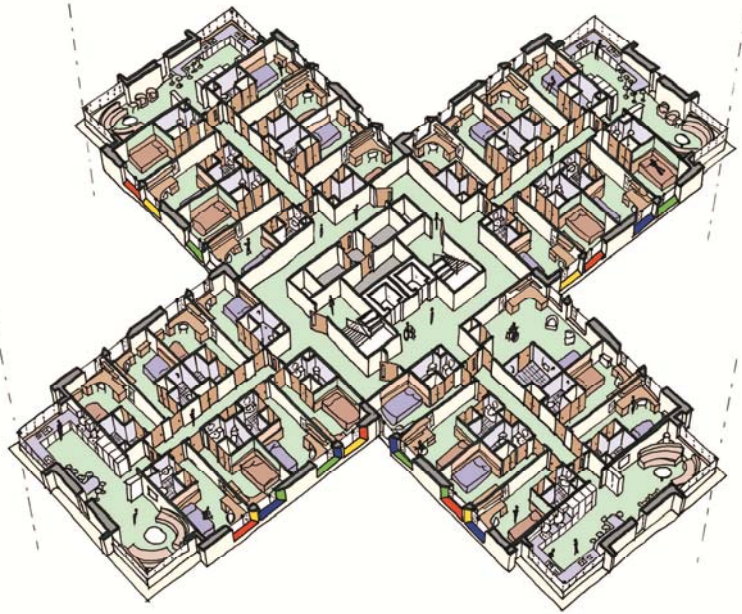








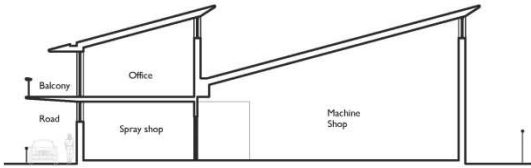
Richardson Road Newcastle







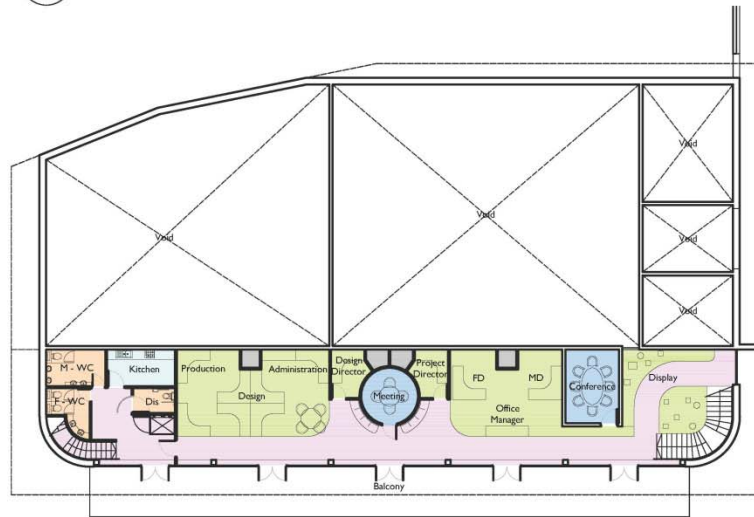
1 Cross Section



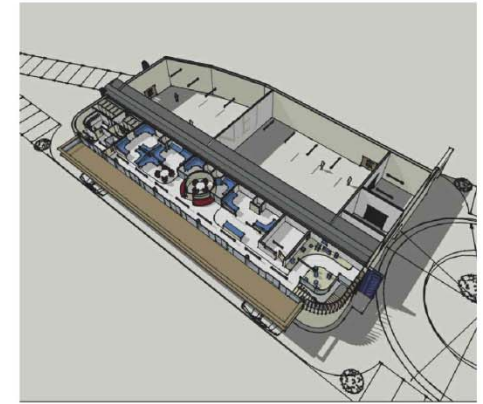
2 External views



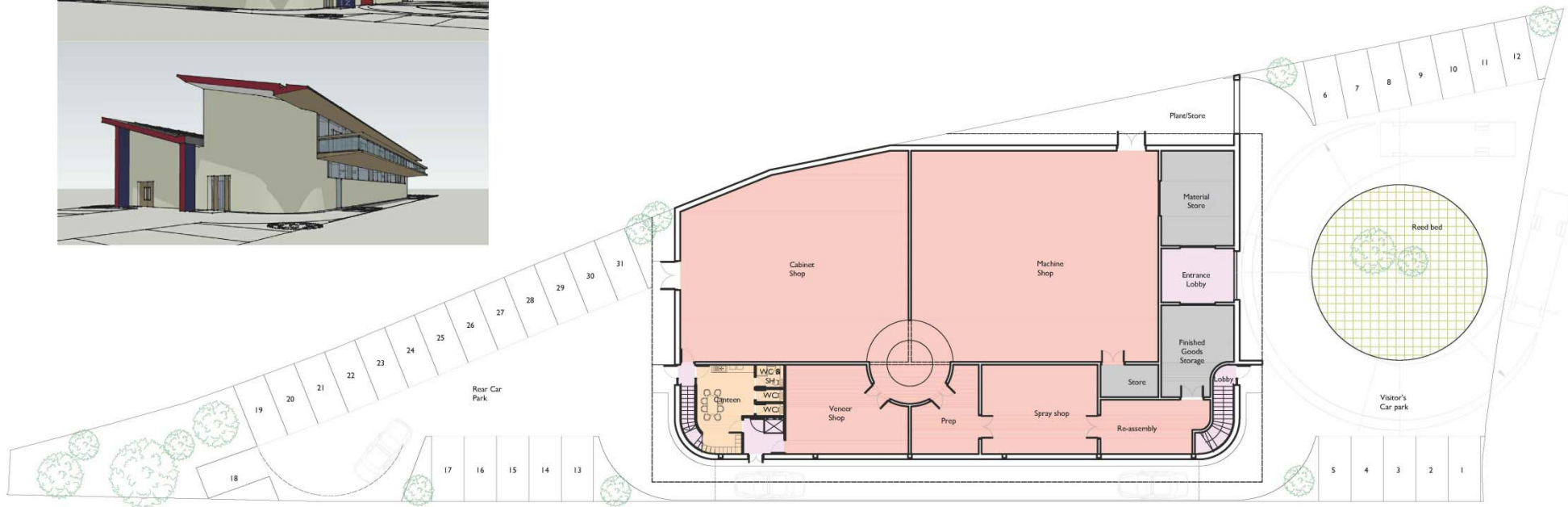
3 Proposed 1st Floor

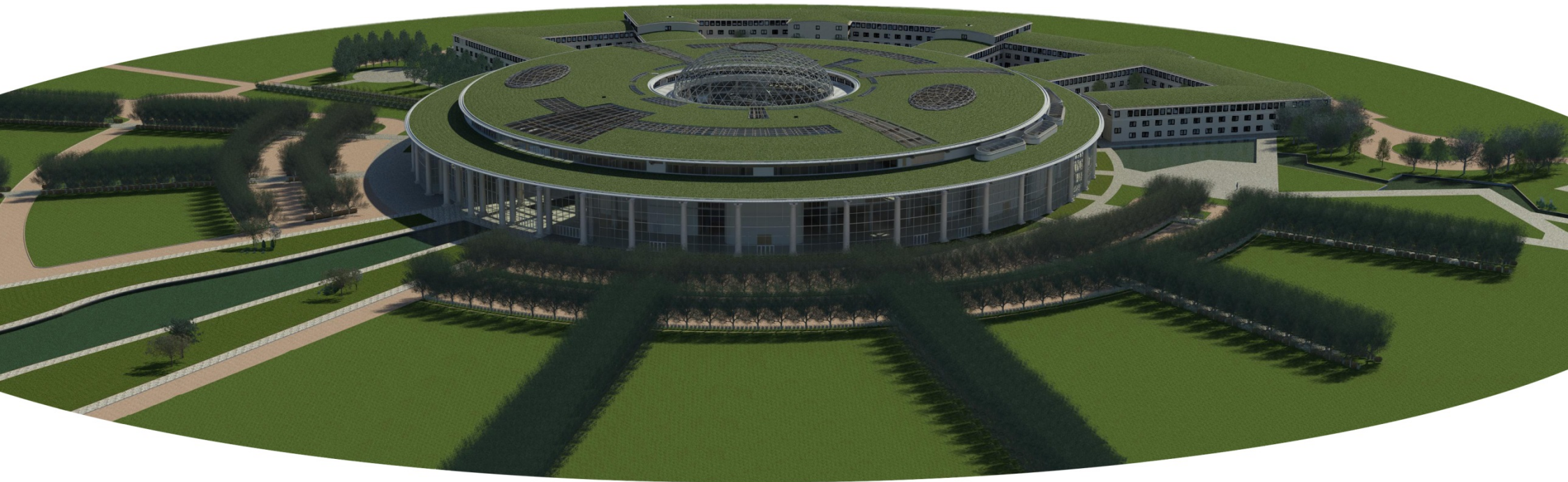


5 Internal view



4 Proposed Ground Floor





NORDISK FORUM FOR BYGNINGSKALK

Rakennuskalkin Pohjoismainen Forum

NYBYGG OG MILJØERFARINGER MED TRADISJONELLE MURHUS



Torsdag 29. Oktober 2015

Jeremy Blake – Partner Purcell Architects